

# stylerush®



SR302AV

# Contents:-

## How to choose a good flat iron

1. Power of heater
2. Temperature Accuracy
3. Coating of heat plates
4. Safety
5. Conveniences
6. Warranty service

## 1. Power of heater

- Temp. Range: 80° ~ 200°C
- Heat up time to 200 ° C : Less than 40sec
- Instant Recovery time 3 ~ 5sec
- Power 200 ~ 240V, 50/60Hz
- Rate Input Power 45W

## 2. Temperature Accuracy

- Temp Accuracy or deviation: +/- 5°C

### 3. Coating of heat plates

- Ceramic coating

Stylerush

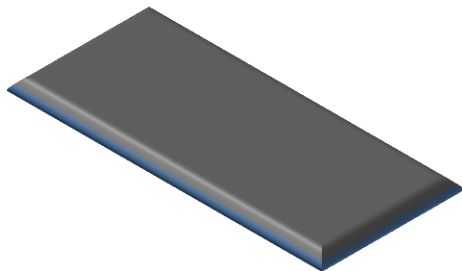


Others



- Size of heat plates

- SR302AV [30.6mm(w) x 90mm(L)]



## 4. Safety

- ON/OFF Switch
- LED Indicator



## 5. Conveniences

- Tilting : heat plates move according to the direction of use
- Cushion : preventing pulling hair and damage from the heat
- Power Cord
  - 2.7 m long for great convenience
  - 360 ° Degree swivel Power cord



## 6. Warranty Service

- 1 years warranty service

# Iron Technique

- Styling Technique
  - a. C-Curls
  - b. In-Curls
  - c. Out-Curls
  - d. Wavy Style
  - e. Flat Style

# Styling Technique



In-Curls



Out-Curls

# Styling Technique



Wavy-Style



C-Curls